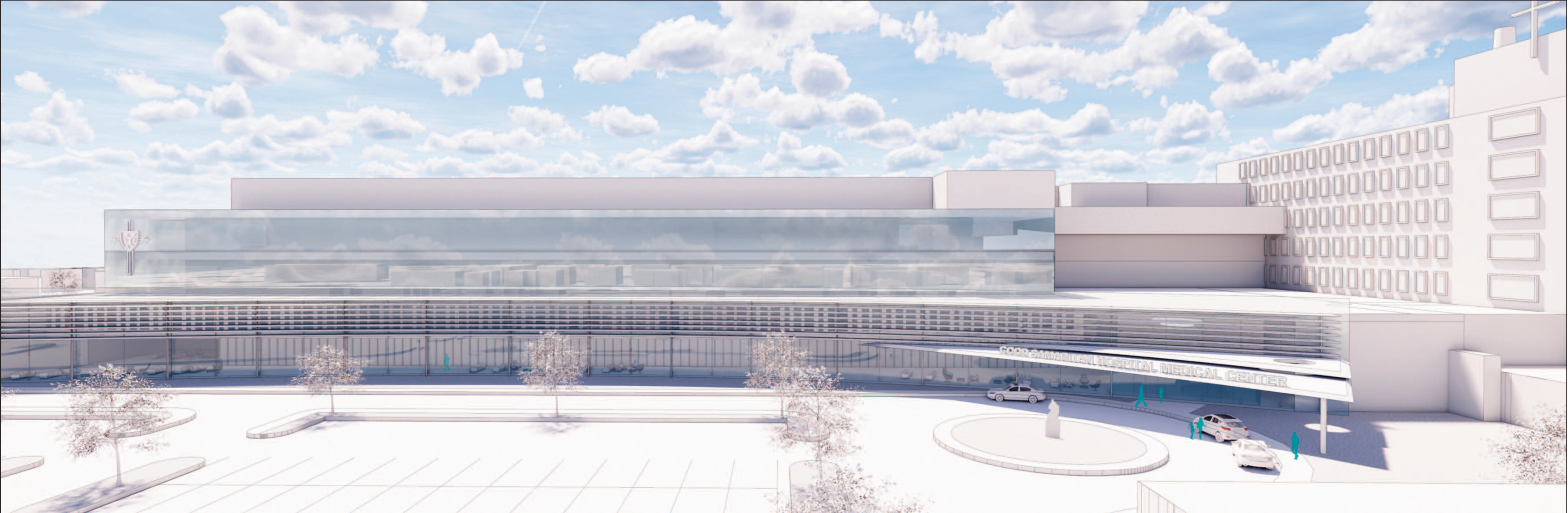


# Good Samaritan Hospital Medical Center



## Present

437 Beds

Opened 1959 - 60 years old  
68% of campus space is in buildings more than 30 years old

10% private patient rooms

Undersized operating rooms limit flexibility for advanced procedures

Fragmented surgical space with long distances to critical areas

Remote Central Sterile Processing area

Undersized Emergency Department

## Future

437 Beds

New Patient Care Pavilion to open in 2025

46% private patient rooms

New operating rooms nearly double the size

Greater access and accommodations for patients and families

New Central Sterile Processing area with quick access to operating rooms, allowing for more advanced procedures

New Emergency Department with redirected ambulance traffic to support enhanced access for patients and families